



OCT 31, 2025

CORNELL HEALTHCARE REVIEW

CHR NEWSLETTER VOL. 4

WELCOME TO OUR

Monthly Newsletter!



WHAT'S INSIDE...

- Upcoming workshops, socials, and speaker panels
- Member spotlights
- And more...

Read to find out!

STAY CONNECTED
THROUGH OUR INSTAGRAM
AND WEBSITE!



@cuhealthcarereview

cornellhealthcarereview.org

ANNOUNCEMENTS

- **ARTISTS:** Final art submissions due Sunday, Nov. 2nd @11:59 PM
- **WRITERS:** Final article submissions due Monday, Nov. 3rd @11:59 PM
- **FA25 FLOWCHART** with submission links
- **Member Spotlight Form:** get featured!
- **Award Nomination Form**
- **UPCOMING EVENTS:**
 - 3 socials
 - 2 speaker events
 - CHRx for Thought Seminar

Upcoming Socials

WORKSHOP SOCIAL

DATE: Saturday, Nov. 1st

TIME: 3-5 PM

LOCATION: Rockefeller 102

Join us for our final workshop social of the semester! This is a great opportunity to clarify last-minute questions for any role before the final deadlines.

We will go over:

- All article and member requirements
- Considerations for awards
- Requirements for publication in our print edition
- Upcoming events and initiatives, including a Presentation Seminar and our Special Edition Issue
- Open Eboard positions for next semester



PAINTING SOCIAL

DATE: Friday, Nov. 21st

TIME: 6:30-8 PM

LOCATION: Rockefeller 102

Wind down the week by painting with us! It'll be a great way to meet CHR members in a casual and fun setting :)



Upcoming Speaker Events

MEDICAL STUDENT SPEAKER PANEL

DATE: Saturday, Nov. 8th

TIME: 4-5 PM

LOCATION: Zoom (virtual)

[RSVP on CampusGroups](#)

Submit your questions for our panelists via the [Question Submission Form](#)

PHYSICIAN SPEAKER EVENT (TBD)

Dr. Christine Teal (MD) is a board-certified physician in General Surgery and a professor at the George Washington University School of Medicine & Health Sciences.

She currently holds the positions of Director of Breast Care Center and the Chief of Breast Surgery. She is a Cornell Human Ecology alumni, and earned her medical degree at the University of Pennsylvania Perelman School of Medicine.

Her research has been published in the Journal of Cancer Education, American Journal of Surgery, Breast Journal, and Radiology.

Join us in hearing about her experience, and bring questions!



Medical Student Speaker Panel



Jack Bookbinder**Alice Hu****Edrea Jiang****Henry Qin**

Come speak with students at the University of Rochester School of Medicine and Dentistry and hear about their experiences

Saturday, November 8th
4:00 - 5:00 PM via Zoom



CHRx for Thought

PRESCRIPTION FOR THOUGHT SEMINAR

Introducing CHR's first student seminar!

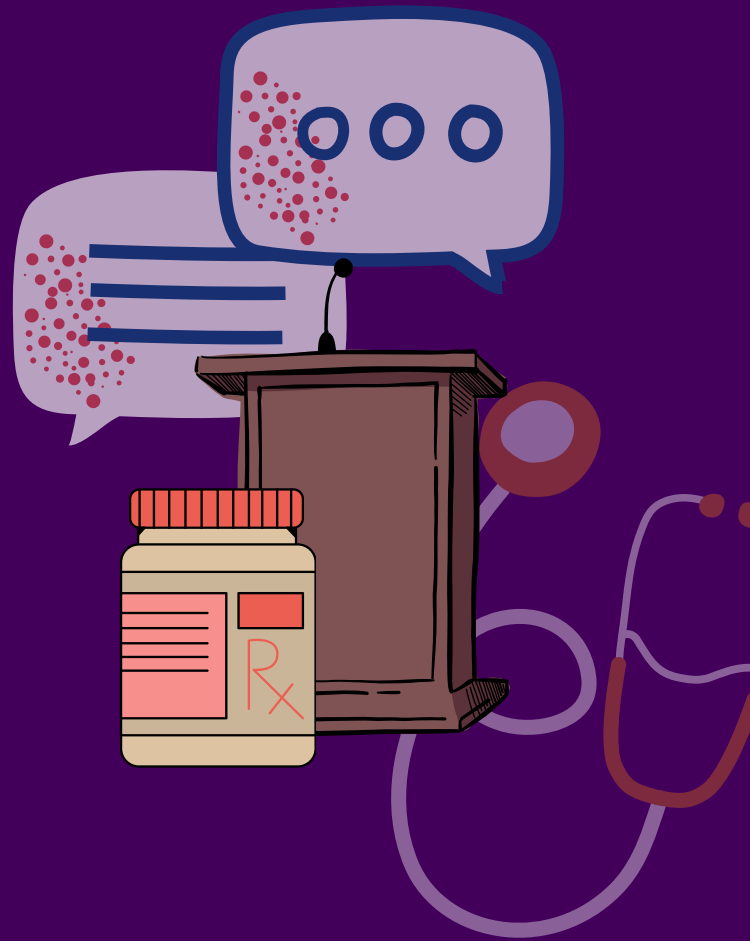
DATE: Saturday, Nov. 22nd

TIME: 3-5 PM

LOCATION: RCK 122

This is a new opportunity to:

- Present your research
- Discuss your article
- Showcase your artwork
- Bring attention to a pertinent issue or topic in healthcare



LOGISTICS

- You will be assigned either a 5 or 10 min slot to present
- Presentations should include some form of visuals. For example:
 - Presentation slides
 - Figures and diagrams
 - Artwork and photography
- All presenters will be given certificates and goodie bags

Member Spotlights

1

Hanni Yang

Animal Science, 2028

"Being part of CHR has been such a fun and meaningful experience. I really enjoyed getting to write about a topic I care about and seeing how my ideas could reach others on campus. It's taught me a lot about working with others, editing, and expressing my thoughts clearly. More than anything, I love how CHR gives students a voice and a space to share what matters to them."



WRITER

Excerpt from "Mental Health Care Access Among College Students"

Taking care of your mental health is just as important as taking care of your physical health. When Cornell students feel supported and know that getting help is normal and possible, they are more likely to seek the help they need and can also take steps themselves to reduce stigma, support their peers, and promote a healthier campus community.

Member Spotlights

2

Sophie Rinzler

Healthcare Policy, 2029

“Writing this article for CHR has allowed me to examine how emerging health technologies, like AI medical scribes, intersect with issues of equity, trust, and patient care. I joined CHR because I wanted to contribute to conversations at the crossroads of policy, technology, and ethics; I hope readers come away with a deeper awareness of how innovations that promise efficiency also raise questions about bias, transparency, and the preservation of the human voice in medicine.”



WRITER

Excerpt from “**AI Is Listening. Are Patients Being Heard?**”

If implemented thoughtfully, AI scribes could reduce distraction and enable clinicians to engage more fully with patients. But if adopted without safeguards, they risk embedding bias, undermining privacy, and diminishing patient voices. For patients, the stakes are high: these systems will either strengthen the human connection in medicine or accelerate its erosion. The idealistic healthcare system depends on balancing innovation with fairness, transparency, and above all, the preservation of patient stories.

Member Spotlights

3

Rachel John Jacob

Physics, 2029

“CHR addresses significant topics in today’s society, like how Trump’s ‘Big Beautiful Bill’ can impact access to healthcare or how college students often struggle to seek mental health support because they’re overworked. As a freshman in CHR and in my first cycle, I appreciate that this organization lets us meet amazing people while having conversations about important healthcare issues such as bioethics and healthcare disparities. I’m excited to learn and grow through this experience.”



ARTIST



**Article: “Trump’s OBBBA:
Millions Losing Health
Insurance Coverage”
by Reese Visaya**

**Article: “Mental
Health Care
Access Among
College Students”
by Hanni Yang**

